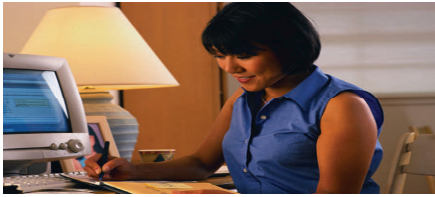


Access to Telework



President Bush created Access To Telework as a special demonstration project focused on expanding employment options for people with disabilities. Twenty states received a federal grant to begin opening doors to employment using creative strategies such as opportunities to work from home, assistance in developing a new or expanding an existing self-owned business, working for an employer at home, accommodations in the workplace, purchasing one's own equipment and the opportunity to telecommute. These examples highlight the basic concepts in developing this national project. In Minnesota, **Telework-MN** is growing at an alarming rate. Telework-MN, like the Micro-Loan Program provides low interest, flexible term, and financial backing to help individuals purchase much needed business equipment. Different from Micro-Loan, **Telework-MN** loans can be used for any type of employment / business related equipment needs from computers and printers to tractors and wheelbarrows. Creative ideas can be realized and dreams of having a career achieved as the result of participating in **Tele-Work MN**. A partnership with the State Vocational Rehabilitation and **EquipALife**, along with our loan products provided through local banks, **Telework-MN** is a one of a kind program. Assistance and support from **EquipALife** staff, loans to fit the individual budget and long term support make **Telework-MN** a wonderful new option for individuals with disabilities.

**"In Minnesota,
36% of all people with
disabilities, age 18 and over, are
unemployed compared with 4.4% of
the general population."**

THERE IS A SOLUTION

The inability to get a job due to mobility issues, or purchase the equipment needed to remain employed, continues to be a barrier for many Minnesotans with disabilities. **There is help!** **Telework-MN** provides financial support for the purchase of equipment, helping individuals build a career as we plan together, provide support, and assist in creating real jobs.

LOOKING FOR A JOB?



1. Are you a Minnesotan with a diagnosed disability?
2. Do you have an employment goal?
3. Are you unemployed, underemployed need a change in environment to keep your job?
4. Does a disability interfere with your ability to do the job?

Contact **EquipALife** at
info@equipalife.org / info@atmn.org
or call

763.479.8239 for an application!

FOR EMPLOYERS

You can provide employment opportunities for talented Minnesotans:

1. Review your employment needs.
2. Are there tasks that can be outsourced?
3. What jobs can be done off-site?
4. Help us spread the word.

Call **EquipALife** with employment opportunities at 763.479.8239 or email **info@equipalife.org** or **info@atmn.org**

TELEWORK-MN example loans:

- * Office & supplies
- * Vehicles
- * Business software and hardware
- * Unique Assistive Technology devices
- * Job tools



You Can Help

Please consider helping **EquipALife** provide equipment and assistive services for Minnesotans with disabilities. Your gift of money or time would be greatly appreciated. Please check the appropriate box below for further information:

- Send me Telework employer information
 - Send me a Telework employee application
 - Add me to your email/ mailing list
 - I am interested in becoming a volunteer
 - I would like to make a donation to **EquipALife** of \$ _____ *
- * Please enclose check or money order

Name _____

Address _____

City, State, Zip _____

Phone, Area Code _____

Email _____

Our Other Programs

INFORMATION & REFERRAL

EquipALife helps individuals locate equipment, provides information and resources, and assists by helping families and professionals to obtain the tools they Need.

MICRO-LOANS

A partnership between local banks and **EquipALife** provides low interest loans to purchase Assistive Technology devices, services, and training.

Minnesota Regions AT Collaborative (MRATC)

Minnesota Regions Assistive Technology Collaborative is a statewide consortium of service providers specializing in adaptive equipment and services.

New Services

Training & Consultation

A new program at **EquipALife** centers on training for the individual, families, and professionals who support them. Customized training, consultation services, and face to face assessment of the need is a unique service available through **EquipALife**. In tandem with Vocational Rehabilitation, counties, and educational settings, **EquipALife** offers this excellent new service targeted to improve the knowledge level of the Assistive Technology user, their families, and professionals.



EquipALife's Mission

To provide a statewide comprehensive, consumer responsive system of Assistive Technology for Minnesotans of all ages and disabilities.

Pat's Story

Pat worked part time at home as a sub contractor assisting other people with unique needs locate meaningful employment. Because of an existing physical challenge it was becoming more difficult to complete the paper-work and reports necessary for her job. With the assistance of **EquipALife's** Telework Program, Pat went through an evaluation to find out what type of equipment would best meet her needs and through the loan provided, purchased new equipment for her home office. Pat is now back on the job thanks to the supports of Telework.

EquipALife's Telework-Minnesota Program is funded in part (90%) through a grant from the US Rehabilitation Services Administration under the Rehabilitation Act of 1975 as amended P.L.105-659 and in cooperation with A System of Technology to Achieve Results (STAR), a program of the State of Minnesota Department of Administration.



5563 Pioneer Creek Drive
Box 310, Maple Plain, MN
55359

Access To Telework

Telework- MN

Access to Employment
for Minnesotans with
Disabilities



A non-profit
organization provid-
ing equipment and
assistive
Services for people
with disabilities